

# EnergyTrendz WEEKLY

Week ending 29 May 2022

Issue 1307

A weekly review of New Zealand electricity markets compiled by Energy Link Ltd

**Prices:**

South Island	BEN			ISL		
	29-May-22	22-May-22	Change	29-May-22	22-May-22	Change
Average Prices	213.75	196.70	↗ 9%	230.84	211.59	↗ 9%
Ratio Day/Night	1.02	1.06	↘ -4%	1.02	1.07	↘ -4%
Ratio Week/Other Day	0.96	1.11	↓ -13%	0.98	1.12	↓ -13%

**Key (Week Difference)**

↑	>=	10%
↗	>=	5%
→	>=	0%
↘	<=	-5%
↓	<=	-10%

North Island	HAY			OTA		
	29-May-22	22-May-22	Change	29-May-22	22-May-22	Change
Average Prices	217.46	198.62	↗ 9%	229.75	216.55	↗ 6%
Ratio Day/Night	1.05	1.09	↘ -4%	1.09	1.17	↘ -7%
Ratio Week/Other Day	0.98	1.12	↓ -12%	1.02	1.12	↘ -9%

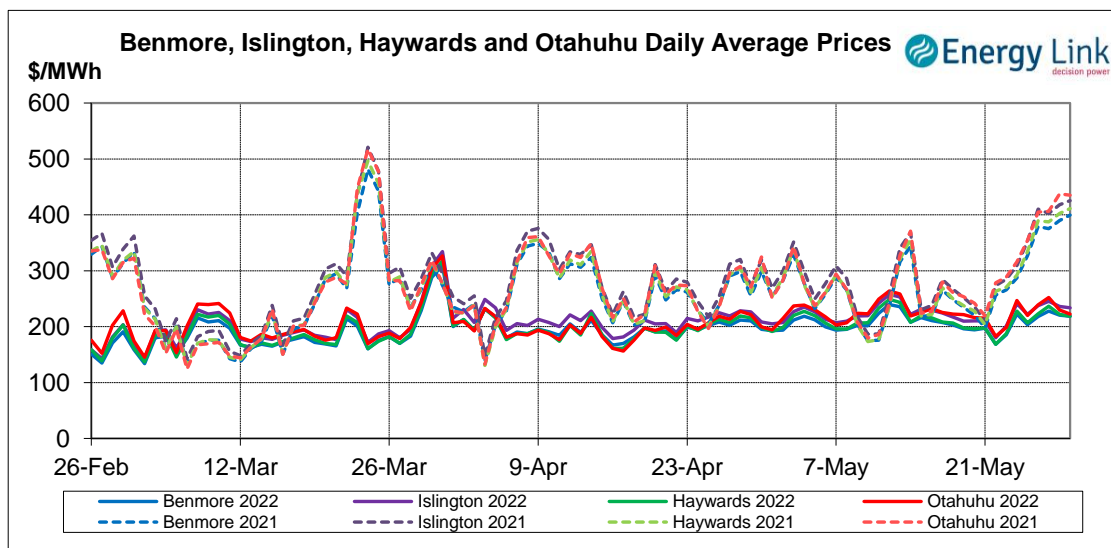
Price Differences	OTA-BEN			HAY-BEN		
	29-May-22	22-May-22	Change	29-May-22	22-May-22	Change
Average differences	15.99	19.85	↓ -19%	3.70	1.91	↑ 94%

All Prices are Final Prices

**Price Highlights:**

	Price \$/MWh	Day	Location	Period
Maximum nodal price	\$587.27	Tuesday, 24 May 2022	Maungaturoto	16
Minimum nodal price	\$0.00	Monday, 23 May 2022	Coleridge	01
Maximum Ben_Hay differential	\$17.10	Tuesday, 24 May 2022		16
Maximum NI reserve price	\$44.26	Saturday, 28 May 2022		17

Please note: Any Provisional Prices are not included in Price Highlights



Subscribe at [www.energylink.co.nz/publications](http://www.energylink.co.nz/publications)

### Average Wholesale Spot Prices

Date	Benmore (\$/MWh)		Islington (\$/MWh)		Haywards (\$/MWh)		Otahuhu (\$/MWh)	
	Day	Night	Day	Night	Day	Night	Day	Night
29/05/2022	217.73	220.09	233.36	234.12	219.93	215.81	226.76	213.26
28/05/2022	215.98	230.00	230.59	246.32	217.85	230.77	227.75	233.90
27/05/2022	223.75	236.49	240.70	253.99	235.83	237.67	256.81	242.69
26/05/2022	224.32	205.39	245.29	222.26	231.60	205.76	249.32	218.08
25/05/2022	201.66	206.74	219.79	225.60	206.90	206.80	223.78	212.05
24/05/2022	220.87	225.01	240.14	243.11	228.86	226.06	249.55	241.20
23/05/2022	199.98	156.48	217.06	168.33	203.70	154.36	218.85	157.82

Note: Night: 00:00 – 08:00 and Day 08:00 – 24:00

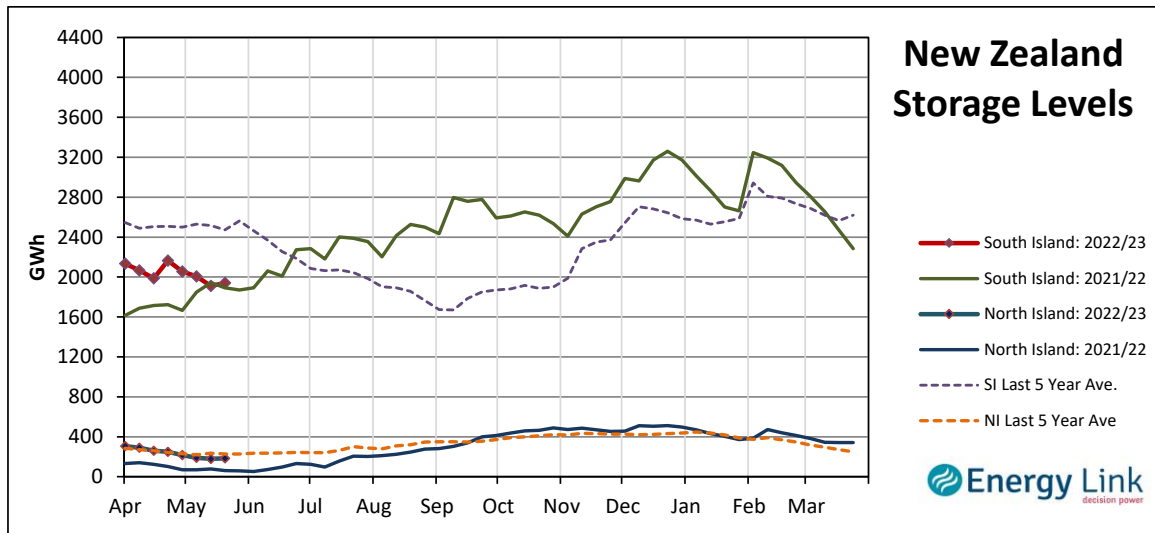
Indicator (\$/MWh)	Benmore	Movement	Islington	Movement	Haywards	Movement	Otahuhu	Movement
Average April 22 Price	195.81	-	211.00	-	195.56	-	197.13	-
Average May 22 Price	207.50	-	223.17	-	211.51	-	225.13	-
4 Week Moving Average Price	208.03	1.3%	223.81	1.4%	212.23	1.2%	226.24	2.0%
Weekly Average Price	213.75	8.7%	230.84	9.1%	217.46	9.5%	229.75	6.1%
Weekday Day Average Price	214.12	3.1%	222.10	-1.5%	221.38	4.2%	239.66	1.1%
Weekday Night Average Price	206.02	7.6%	204.62	-5.4%	206.13	8.8%	214.37	9.0%
Weekend Day Average Price	216.85	19.1%	235.65	8.4%	218.89	19.5%	227.26	11.9%
Weekend Night Average Price	225.05	22.2%	250.16	27.9%	223.29	22.1%	223.58	17.2%
Day - Night Differential	1.02	-3.9%	1.02	-4.2%	1.05	-3.9%	1.09	-6.7%
Weekday - Weekend Differential	0.96	-13.0%	0.98	-12.6%	0.98	-12.2%	1.02	-8.9%

Note: Movement represents difference from last week.

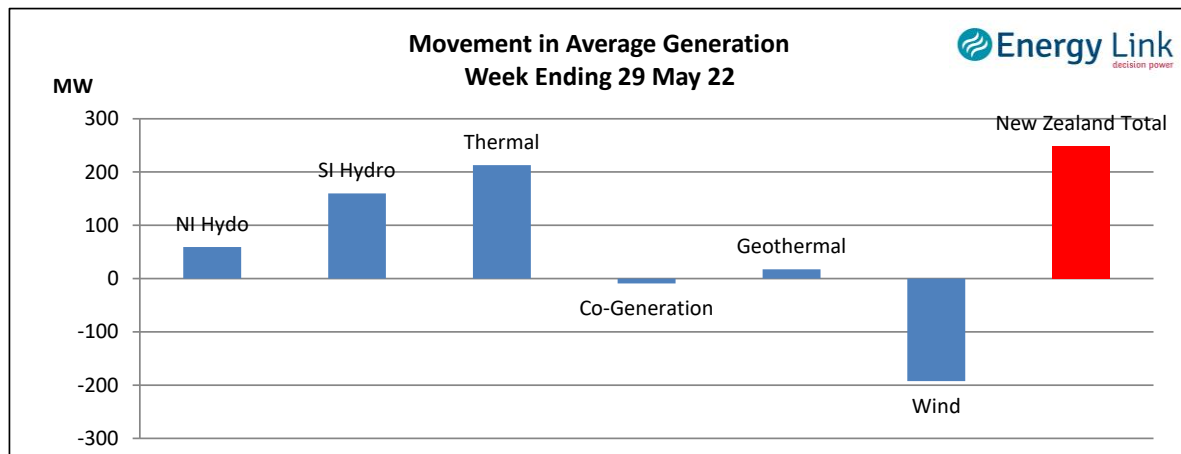
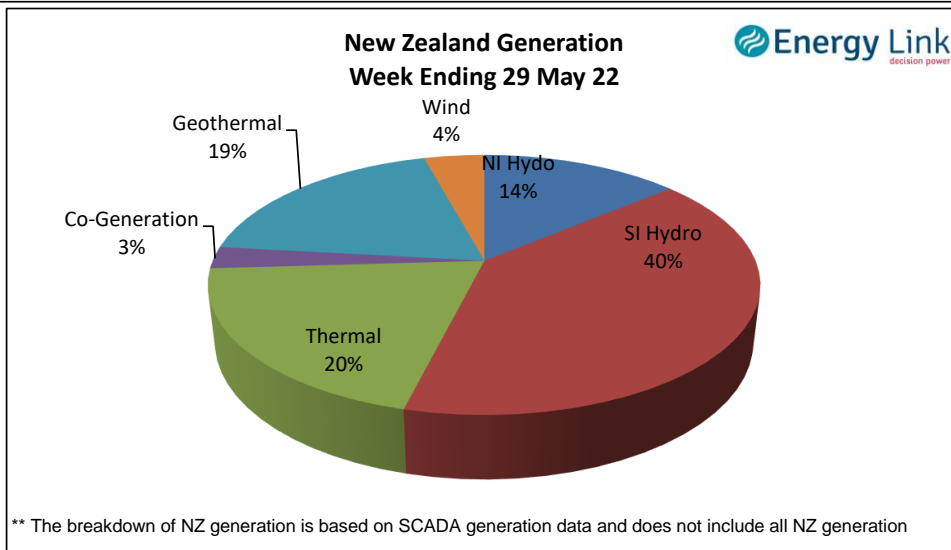
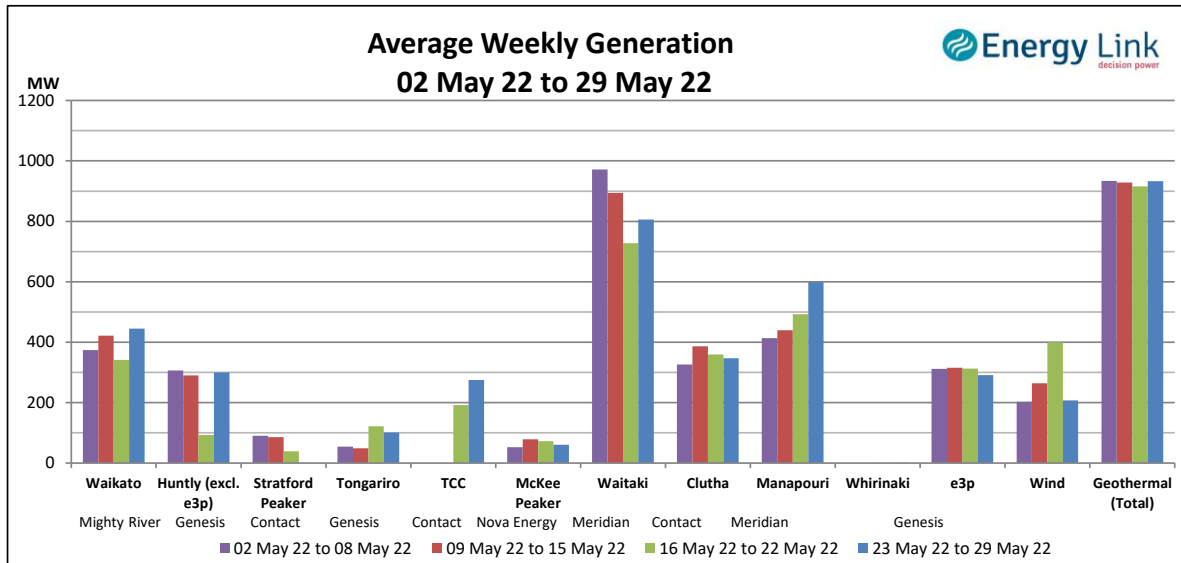
### Storage: (as at last Thursday)

Total Storage increased to 2122 GWh.

NI storage increased by 2% to 182 GWh while SI storage increased by 2% to 1940 GWh.



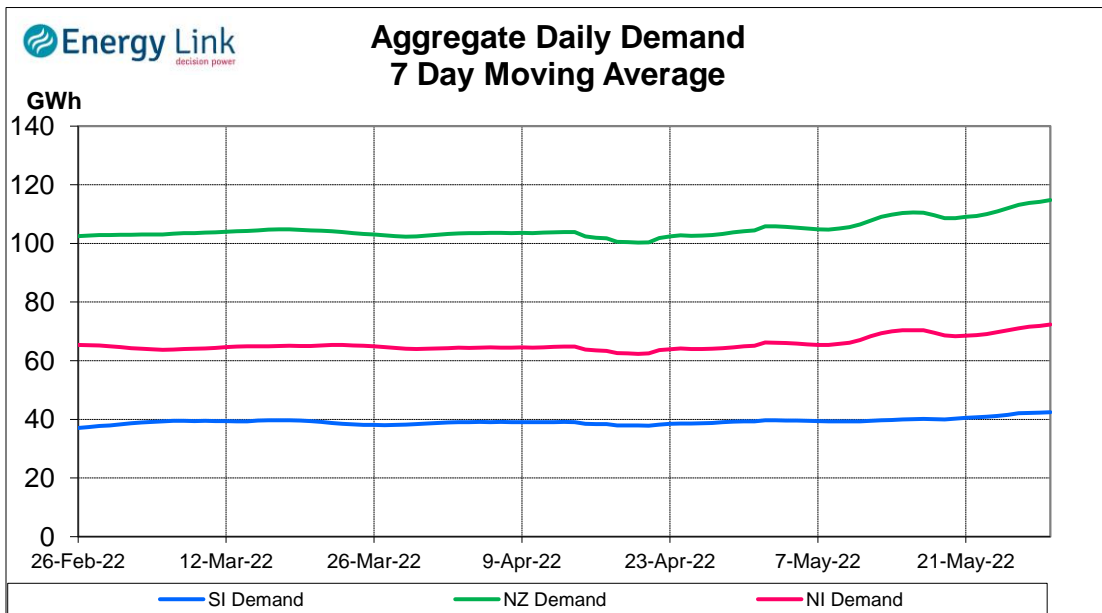
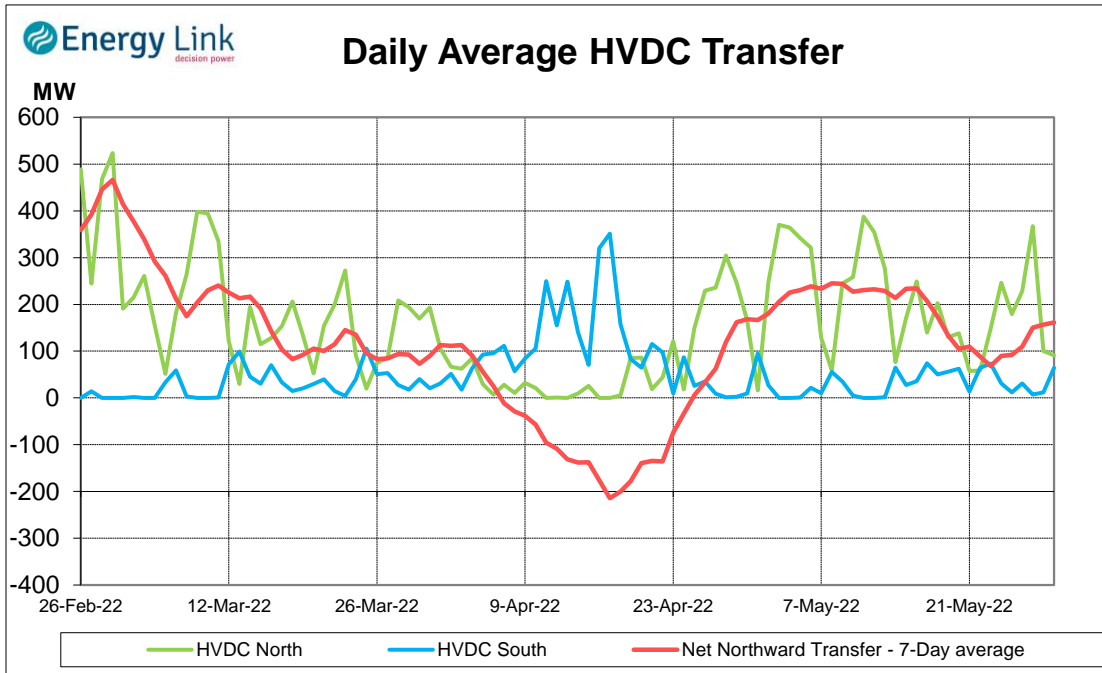
**Generation:**



**Average Generation Market Share <sup>1</sup>**

Contact	Mercury	Genesis	Meridian	Manawa	Other
21% (22%)	20% (21%)	18% (16%)	31% (30%)	3% (3%)	7% (8%)

<sup>1</sup> Generation market share figures are based on SCADA data. The number in brackets represents the generation market share % from the previous week.

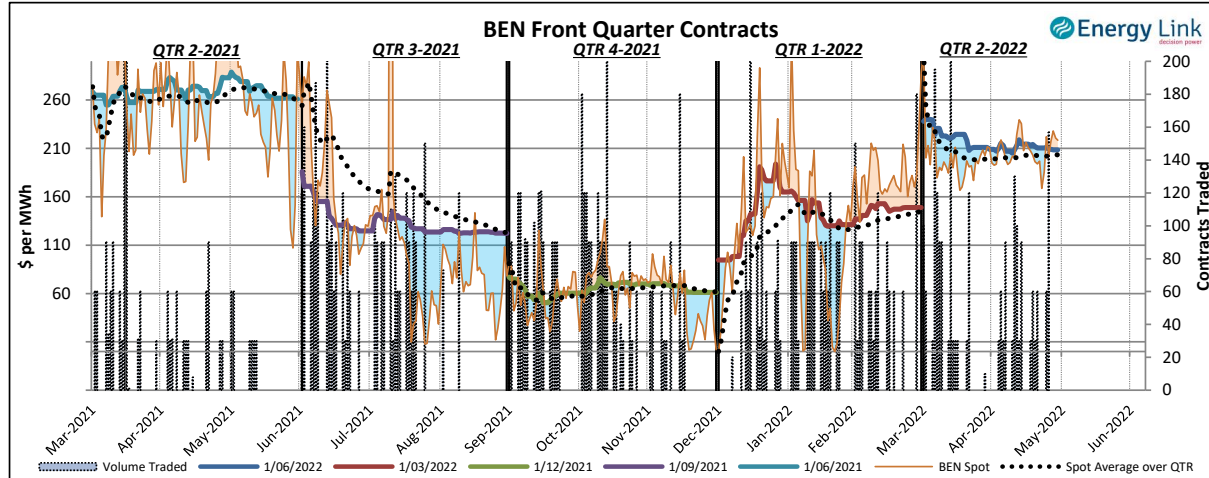
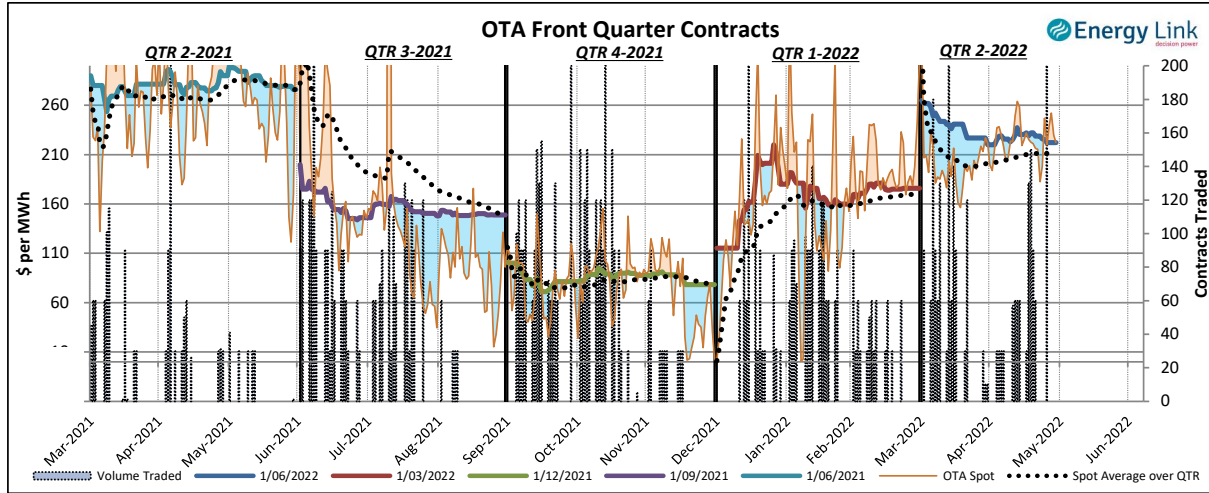


Demand data based on un-reconciled SCADA data.

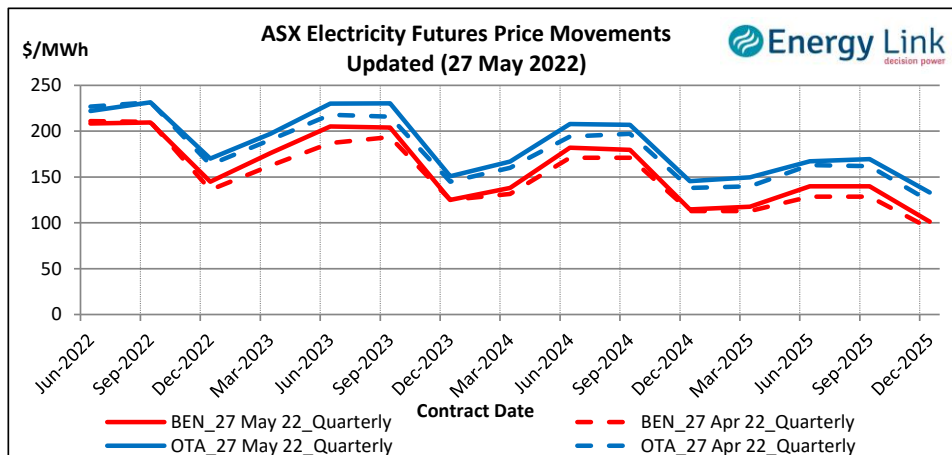
### ASX Electricity Futures

The **Australian Securities Exchange (ASX)** listed Base Load Electricity Futures, Strip Futures and Calendar year Strip Options for two grid reference points (Otauhu and Benmore) in the New Zealand electricity market in July 2009. The ASX New Zealand Electricity Futures contracts are cash settled using the arithmetic average of half-hourly prices at the designated node over the period of a calendar quarter.

The two charts below display the price movements of the front quarter futures contract during the current quarter and for the four quarters prior to the current quarter. Also shown is the volume of contracts traded, the relevant spot price and the spot average price over the quarter during the time when each contract was the front quarter contract.



The chart to the right shows the most recent transactions for all currently traded futures contracts at both the BEN & OTA nodes. For comparison these prices are mapped against the prices for the same contracts four weeks prior to the current Market Review.



### Carbon Dioxide Emissions

The chart below shows the estimated Carbon Dioxide (CO<sub>2</sub>) emissions for New Zealand's major thermal power stations. The estimates are based on weekly generation output and assumptions on each plant's thermal efficiency.

Note: Since 22 Feb 2016, Geothermal plant is now also included in the total carbon emissions.

