

EnergyTrendz WEEKLY

Week ending 10 April 2022

Issue 1300

A weekly review of New Zealand electricity markets compiled by Energy Link Ltd

Prices:

South Island	BEN			ISL		
	10-Apr-22	3-Apr-22	Change	10-Apr-22	3-Apr-22	Change
Average Prices	198.95	230.86	↓ -14%	214.80	247.98	↓ -13%
Ratio Day/Night	1.02	1.32	↓ -23%	1.04	1.34	↓ -23%
Ratio Week/Other Day	1.04	1.19	↓ -13%	1.03	1.18	↓ -13%

Key (Week Difference)

↑	>=	10%
↗	>=	5%
→	>=	0%
↘	<=	-5%
↓	<=	-10%

North Island	HAY			OTA		
	10-Apr-22	3-Apr-22	Change	10-Apr-22	3-Apr-22	Change
Average Prices	197.64	234.35	↓ -16%	198.01	240.05	↓ -18%
Ratio Day/Night	1.05	1.36	↓ -23%	1.08	1.42	↓ -24%
Ratio Week/Other Day	1.04	1.21	↓ -14%	1.05	1.27	↓ -17%

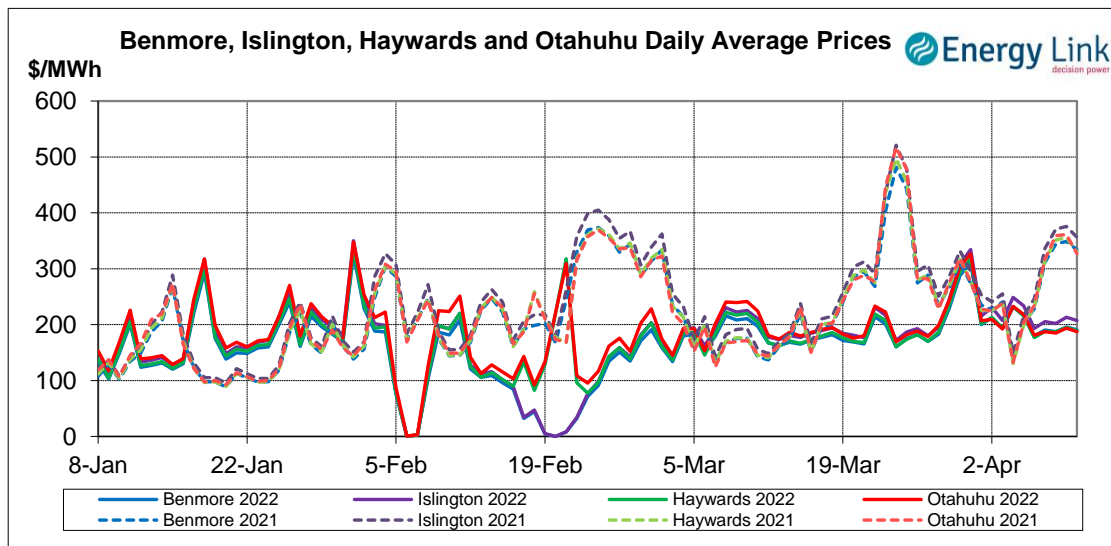
Price Differences	OTA-BEN			HAY-BEN		
	10-Apr-22	3-Apr-22	Change	10-Apr-22	3-Apr-22	Change
Average differences	-0.94	9.19	↓ -110%	-1.31	3.49	↓ -138%

Provisional Prices still apply to: Fri, 08 Apr 22

Price Highlights:

	Price \$/MWh	Day	Location	Period
Maximum nodal price	\$50,000.00	Friday, 8 April 2022	Kaipoi	16
Minimum nodal price	\$0.00	Monday, 4 April 2022	Southbrook	01
Maximum Ben_Hay differential	\$73.11	Wednesday, 6 April 2022		13
Maximum NI reserve price	\$15.06	Sunday, 10 April 2022		35

Please note: Any Provisional Prices are not included in Price Highlights



Subscribe at www.energylink.co.nz/publications

Average Wholesale Spot Prices

Date	Benmore (\$/MWh)		Islington (\$/MWh)		Haywards (\$/MWh)		Otahuhu (\$/MWh)	
	Day	Night	Day	Night	Day	Night	Day	Night
10/04/2022	190.48	191.61	207.74	206.18	190.41	187.36	190.52	182.26
9/04/2022	197.43	192.78	217.58	205.19	197.63	188.32	198.60	184.45
8/04/2022	181.82	198.45	196.43	212.97	182.11	197.36	182.44	190.71
7/04/2022	191.43	188.27	207.10	201.64	192.10	179.35	193.49	175.33
6/04/2022	175.25	188.31	189.79	200.40	174.37	181.15	181.72	179.94
5/04/2022	229.06	192.03	247.92	204.83	230.02	187.08	234.87	184.47
4/04/2022	236.27	222.92	254.66	237.29	237.10	222.38	240.67	216.80

Note: Night: 00:00 – 08:00 and Day 08:00 – 24:00

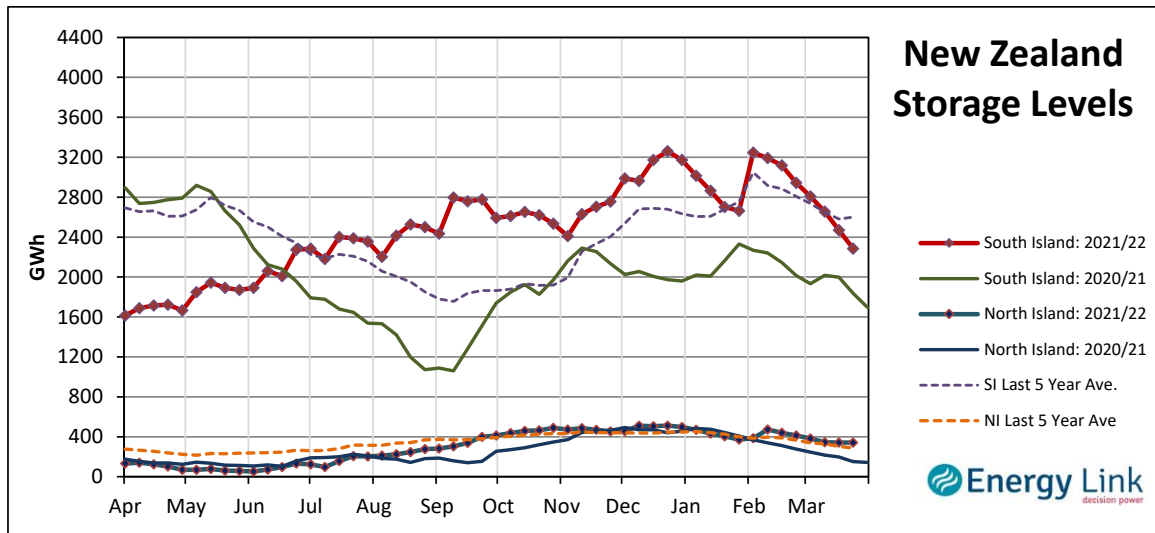
Indicator (\$/MWh)	Benmore	Movement	Islington	Movement	Haywards	Movement	Otahuhu	Movement
Average March 22 Price	187.84	-	200.87	-	191.31	-	203.62	-
Average April 22 Price	199.90	-	215.68	-	199.14	-	199.43	-
4 Week Moving Average Price	195.81	1.0%	210.23	1.2%	197.41	0.1%	204.21	-2.0%
Weekly Average Price	198.95	-13.8%	214.80	-13.4%	197.64	-15.7%	198.01	-17.5%
Weekday Day Average Price	202.76	-24.6%	221.86	-21.9%	203.14	-26.5%	206.64	-28.7%
Weekday Night Average Price	198.00	5.2%	209.36	10.3%	193.46	2.9%	189.45	0.9%
Weekend Day Average Price	193.96	-6.5%	207.00	-9.7%	194.02	-7.0%	194.56	-6.4%
Weekend Night Average Price	192.20	-1.1%	209.08	-0.3%	187.84	-2.4%	183.35	-1.5%
Day - Night Differential	1.02	-22.9%	1.04	-22.9%	1.05	-23.0%	1.08	-23.9%
Weekday - Weekend Differential	1.04	-12.7%	1.03	-13.0%	1.04	-14.2%	1.05	-17.4%

Note: Movement represents difference from last week.

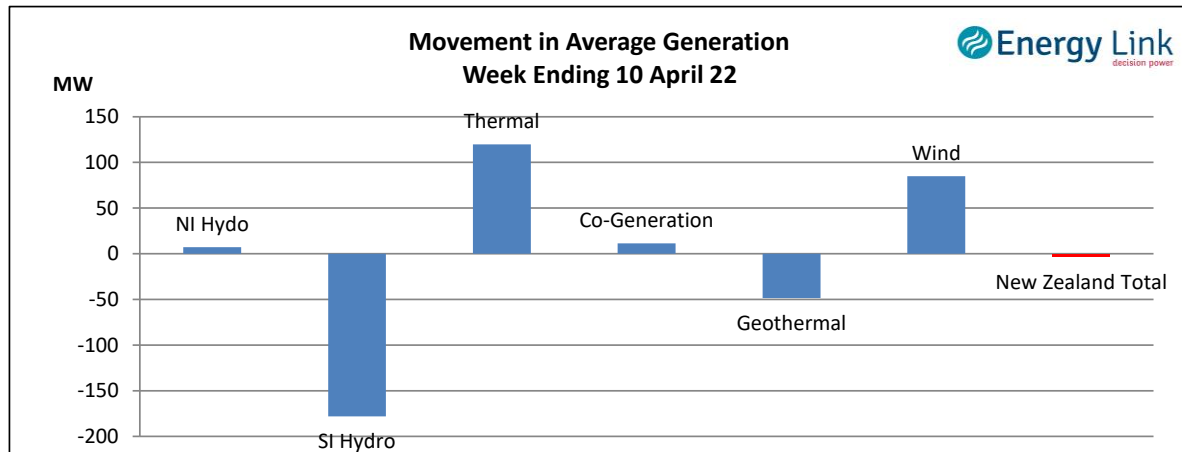
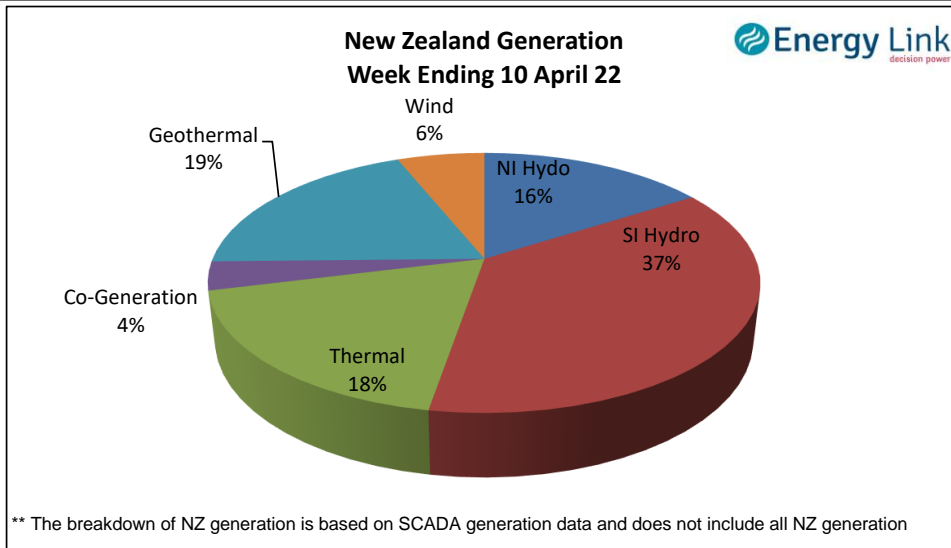
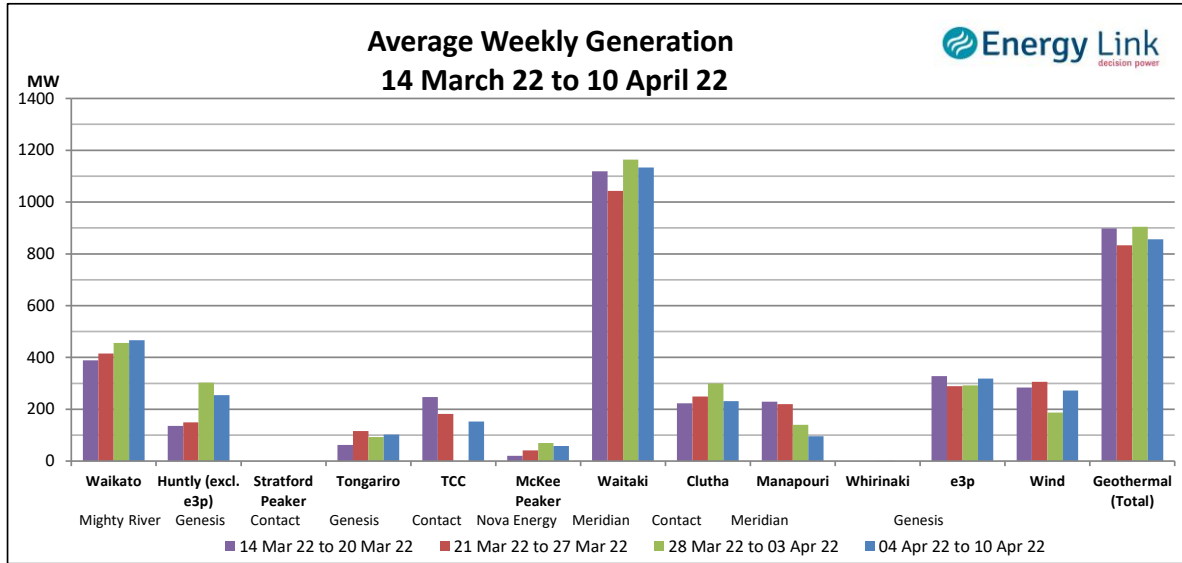
Storage: (as at last Thursday)

Total Storage decreased to 2624 GWh.

NI storage decreased by 1 % to 340 GWh while SI storage decreased by 8% to 2284 GWh.



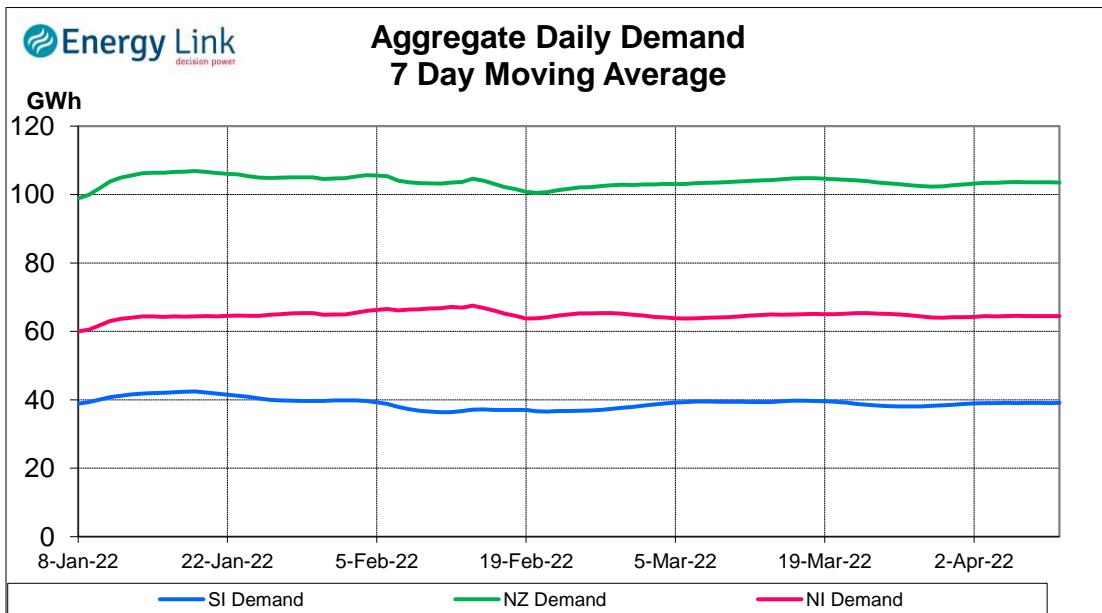
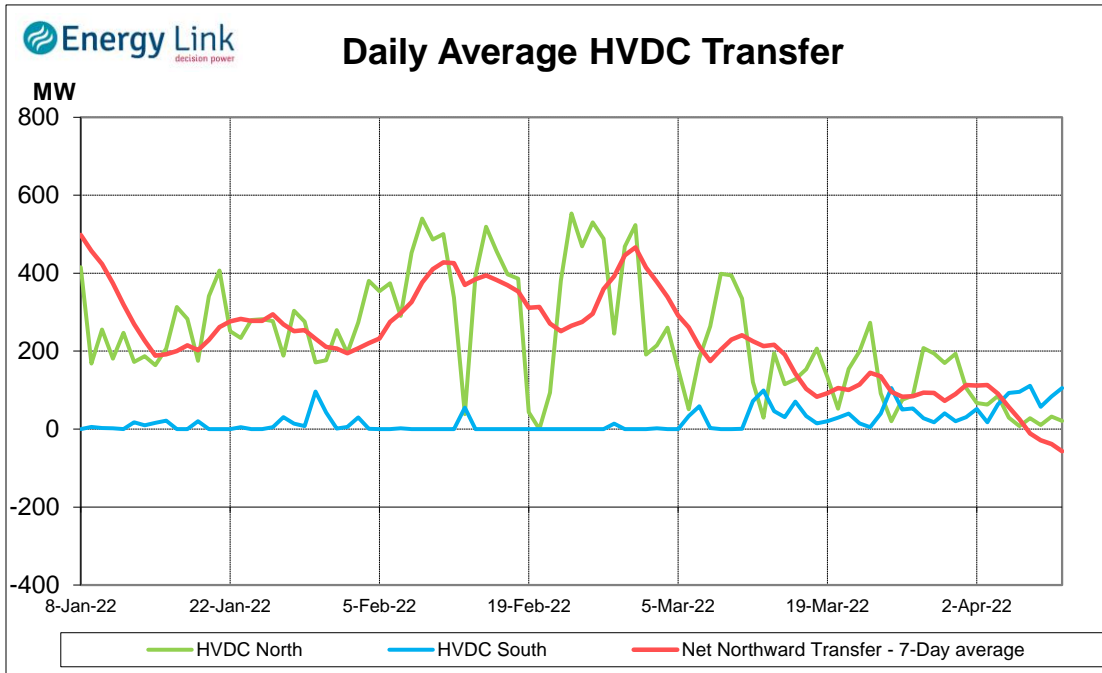
Generation:



Average Generation Market Share ¹

Contact	Mercury	Genesis	Meridian	Trustpower	Other
19% (17%)	21% (22%)	21% (21%)	31% (31%)	2% (2%)	6% (7%)

¹ Generation market share figures are based on SCADA data. The number in brackets represents the generation market share % from the previous week.

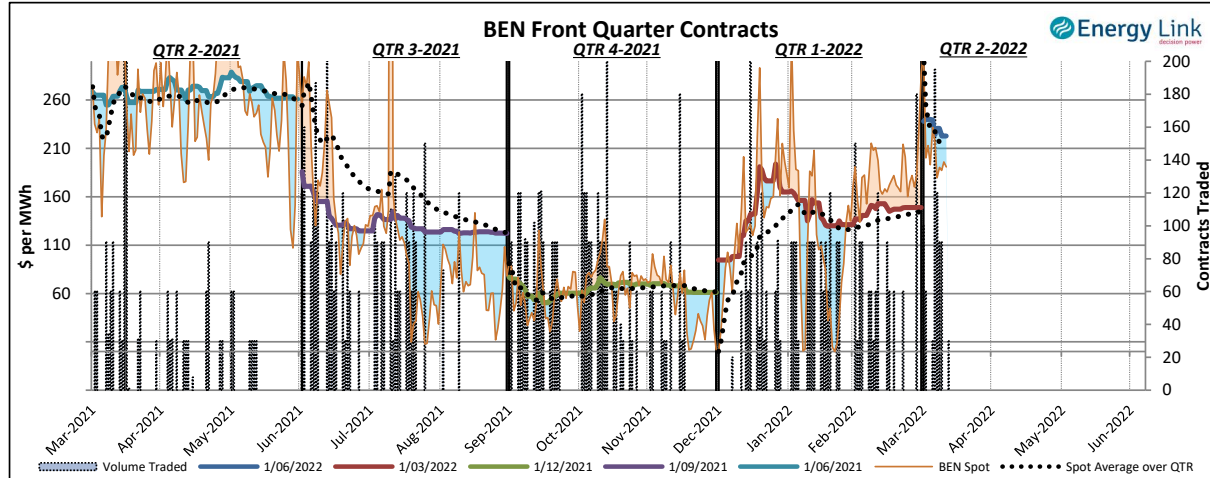
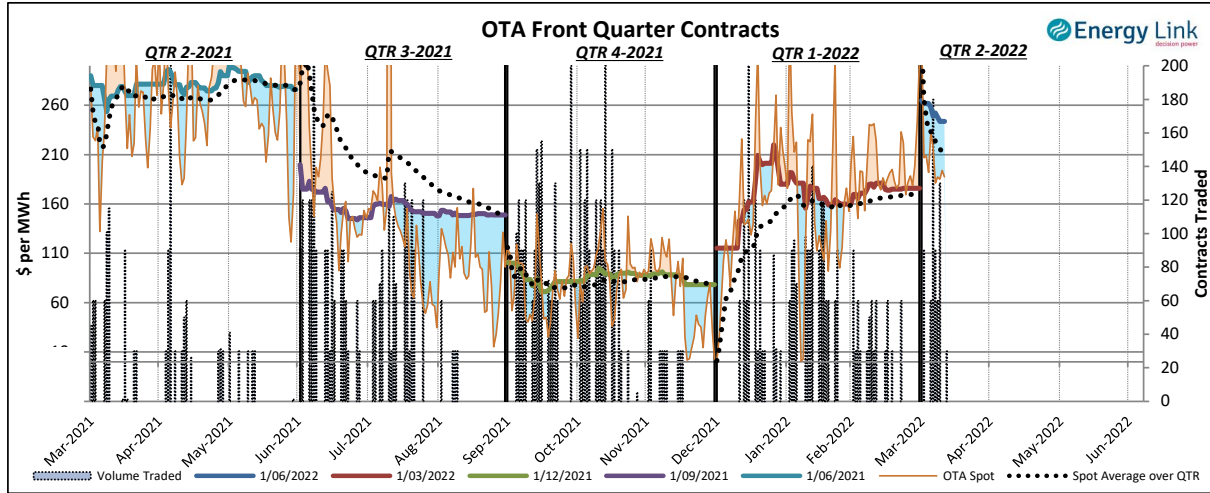


Demand data based on un-reconciled SCADA data.

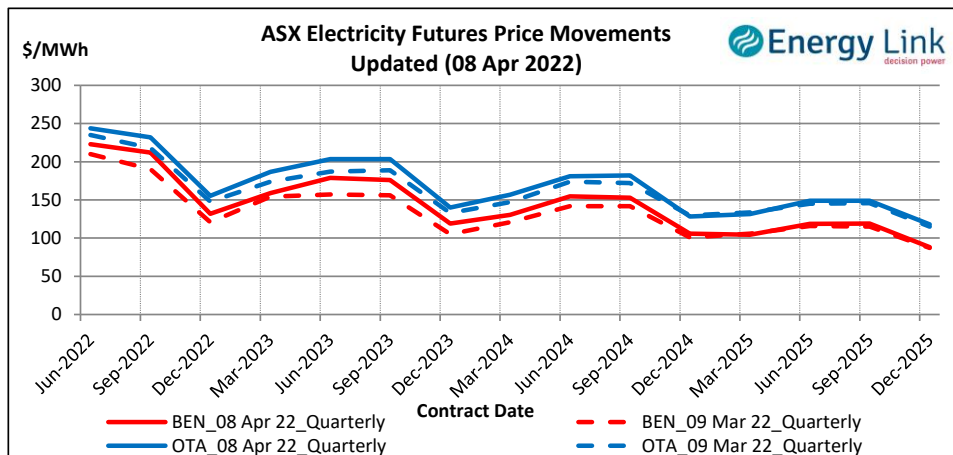
ASX Electricity Futures

The **Australian Securities Exchange (ASX)** listed Base Load Electricity Futures, Strip Futures and Calendar year Strip Options for two grid reference points (Otauhu and Benmore) in the New Zealand electricity market in July 2009. The ASX New Zealand Electricity Futures contracts are cash settled using the arithmetic average of half-hourly prices at the designated node over the period of a calendar quarter.

The two charts below display the price movements of the front quarter futures contract during the current quarter and for the four quarters prior to the current quarter. Also shown is the volume of contracts traded, the relevant spot price and the spot average price over the quarter during the time when each contract was the front quarter contract.



The chart to the right shows the most recent transactions for all currently traded futures contracts at both the BEN & OTA nodes. For comparison these prices are mapped against the prices for the same contracts four weeks prior to the current Market Review.



Carbon Dioxide Emissions

The chart below shows the estimated Carbon Dioxide (CO₂) emissions for New Zealand's major thermal power stations. The estimates are based on weekly generation output and assumptions on each plant's thermal efficiency.

Note: Since 22 Feb 2016, Geothermal plant is now also included in the total carbon emissions.

