



Week ending 30 January 2022

Issue 1290

A weekly review of New Zealand electricity markets compiled by Energy Link Ltd

Prices:

South Island	BEN			ISL		
	30-Jan-22	23-Jan-22	Change	30-Jan-22	23-Jan-22	Change
Average Prices	193.76	183.61	↗ 6%	207.49	197.21	↗ 5%
Ratio Day/Night	1.17	1.26	↘ -7%	1.17	1.28	↘ -8%
Ratio Week/Other Day	1.03	1.27	↘ -19%	1.04	1.29	↘ -19%

Key (Week Difference)

↑	>=	10%
↗	>=	5%
→	>=	0%
↘	<=	-5%
↓	<=	-10%

North Island	HAY			OTA		
	30-Jan-22	23-Jan-22	Change	30-Jan-22	23-Jan-22	Change
Average Prices	198.49	189.18	↗ 5%	212.51	202.95	↗ 5%
Ratio Day/Night	1.20	1.29	↘ -7%	1.31	1.35	↘ -3%
Ratio Week/Other Day	1.04	1.28	↘ -19%	1.04	1.32	↘ -21%

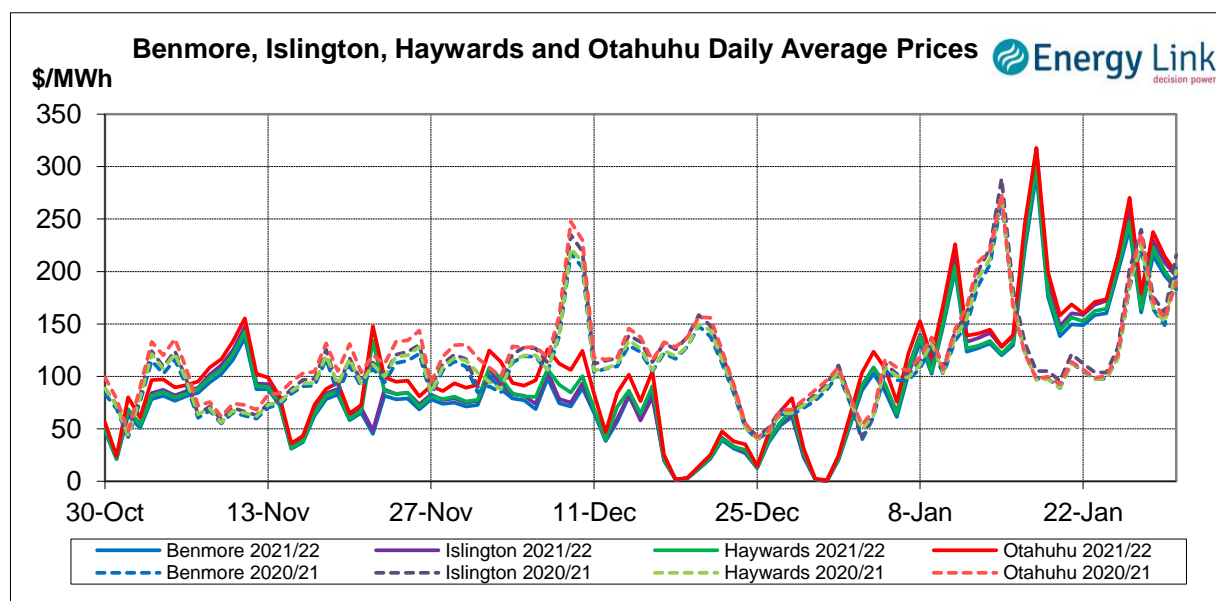
Price Differences	OTA-BEN			HAY-BEN		
	30-Jan-22	23-Jan-22	Change	30-Jan-22	23-Jan-22	Change
Average differences	18.75	19.34	↘ -3%	4.74	5.57	↘ -15%

All Prices are Final Prices

Price Highlights:

	Price \$/MWh	Day	Location	Period
Maximum nodal price	\$584.07	Friday, 28 January 2022	Balclutha	43
Minimum nodal price	\$0.00	Monday, 24 January 2022	Reefton	16
Maximum Ben_Hay differential	\$19.13	Wednesday, 26 January 2022		25
Maximum NI reserve price	\$11.00	Wednesday, 26 January 2022		29

Please note: Any Provisional Prices are not included in Price Highlights



Subscribe at www.energylink.co.nz/publications

Average Wholesale Spot Prices

Date	Benmore (\$/MWh)		Islington (\$/MWh)		Haywards (\$/MWh)		Otahuhu (\$/MWh)	
	Day	Night	Day	Night	Day	Night	Day	Night
30/01/2022	198.26	152.89	211.41	163.59	203.39	148.27	221.98	150.06
29/01/2022	194.85	198.65	207.49	211.23	200.23	200.90	219.29	204.44
28/01/2022	236.98	171.64	252.55	183.26	247.85	172.77	269.28	174.19
27/01/2022	170.22	142.91	182.71	153.07	175.04	141.86	195.64	147.32
26/01/2022	256.53	209.02	277.05	222.99	265.33	211.72	300.89	209.00
25/01/2022	207.00	185.67	223.32	197.97	214.03	188.10	228.13	187.06
24/01/2022	160.28	159.84	173.20	169.81	165.80	161.39	178.30	163.63

Note: Night: 00:00 – 08:00 and Day 08:00 – 24:00

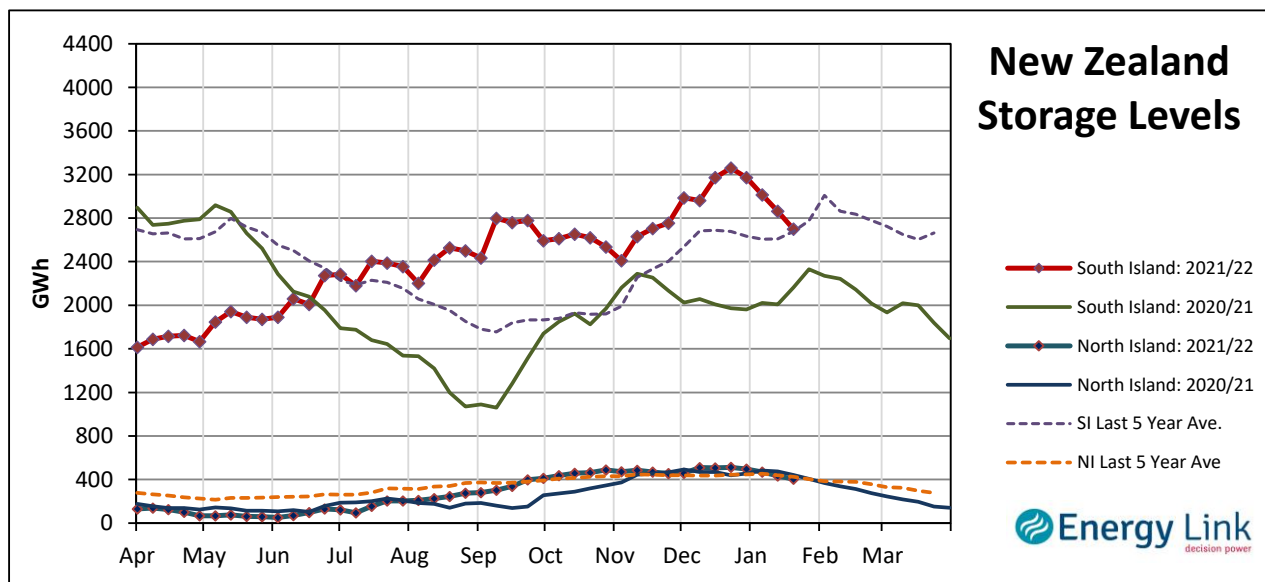
Indicator (\$/MWh)	Benmore	Movement	Islington	Movement	Haywards	Movement	Otahuhu	Movement
Average December 21 Price	49.99	-	52.17	-	55.00	-	64.81	-
Average January 22 Price	145.69	-	155.98	-	150.05	-	162.88	-
4 Week Moving Average Price	153.44	36.2%	164.33	36.4%	157.96	35.4%	171.35	34.0%
Weekly Average Price	193.76	5.5%	207.49	5.2%	198.49	4.9%	212.51	4.7%
Weekday Day Average Price	206.20	-3.1%	207.02	-8.7%	213.61	-3.3%	234.45	-3.0%
Weekday Night Average Price	173.82	7.7%	178.28	7.6%	175.17	7.0%	176.24	3.6%
Weekend Day Average Price	196.55	24.4%	230.02	42.3%	201.81	23.8%	220.64	27.5%
Weekend Night Average Price	175.77	21.5%	197.25	27.5%	174.59	19.4%	177.25	17.7%
Day - Night Differential	1.17	-7.3%	1.17	-8.1%	1.20	-6.7%	1.31	-3.3%
Weekday - Weekend Differential	1.03	-19.1%	1.04	-19.5%	1.04	-18.8%	1.04	-20.8%

Note: Movement represents difference from last week.

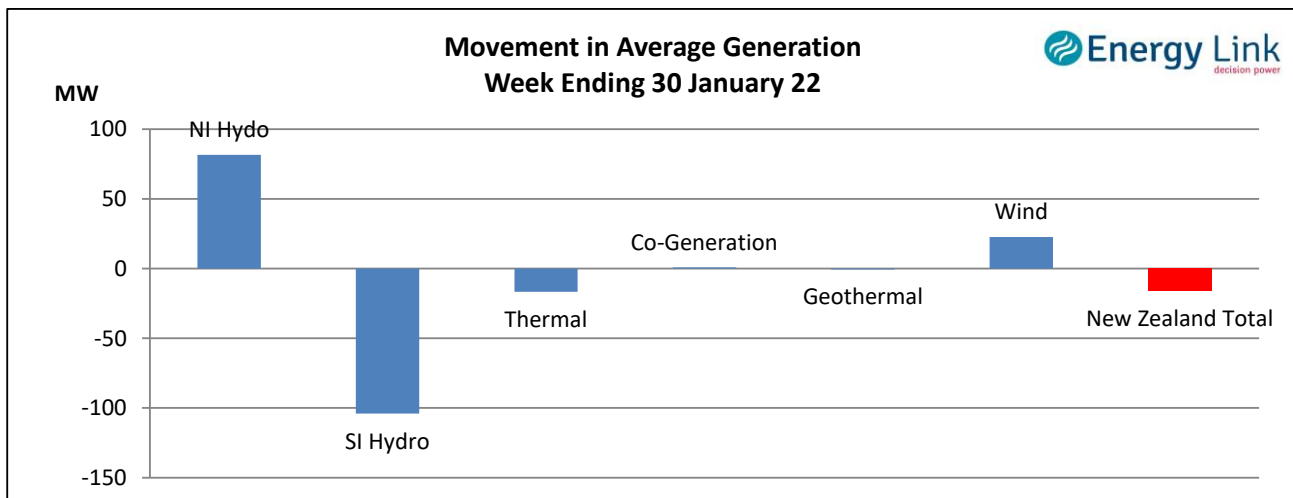
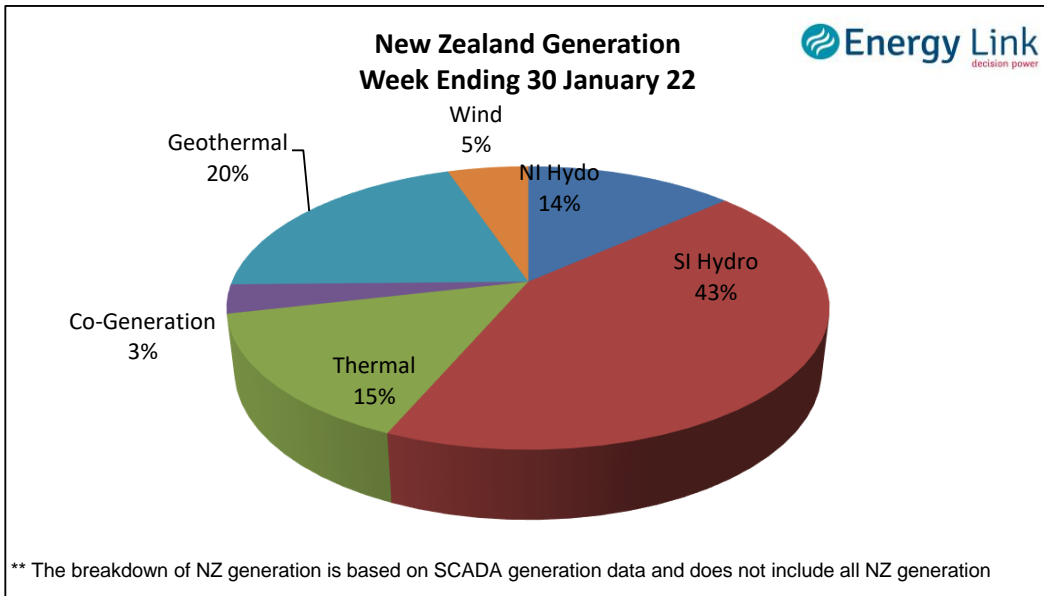
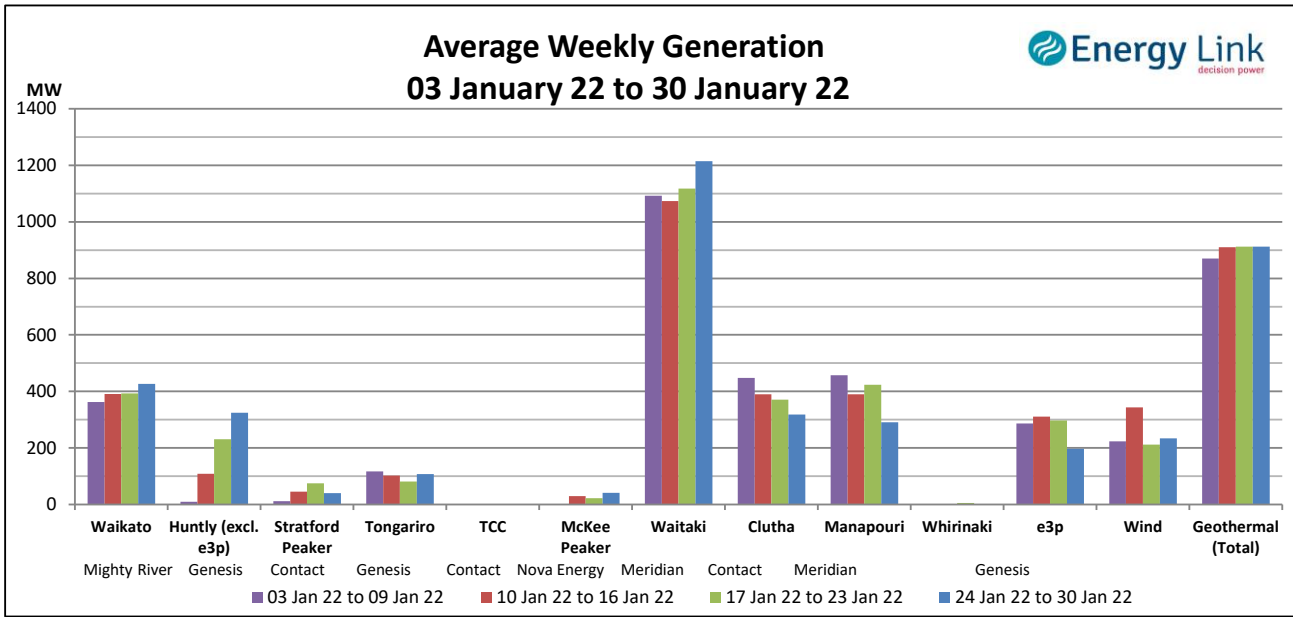
Storage: (as at last Thursday)

Total Storage decreased to 3104 GWh.

NI storage decreased by 7 % to 404 GWh while SI storage decreased by 6% to 2700 GWh.



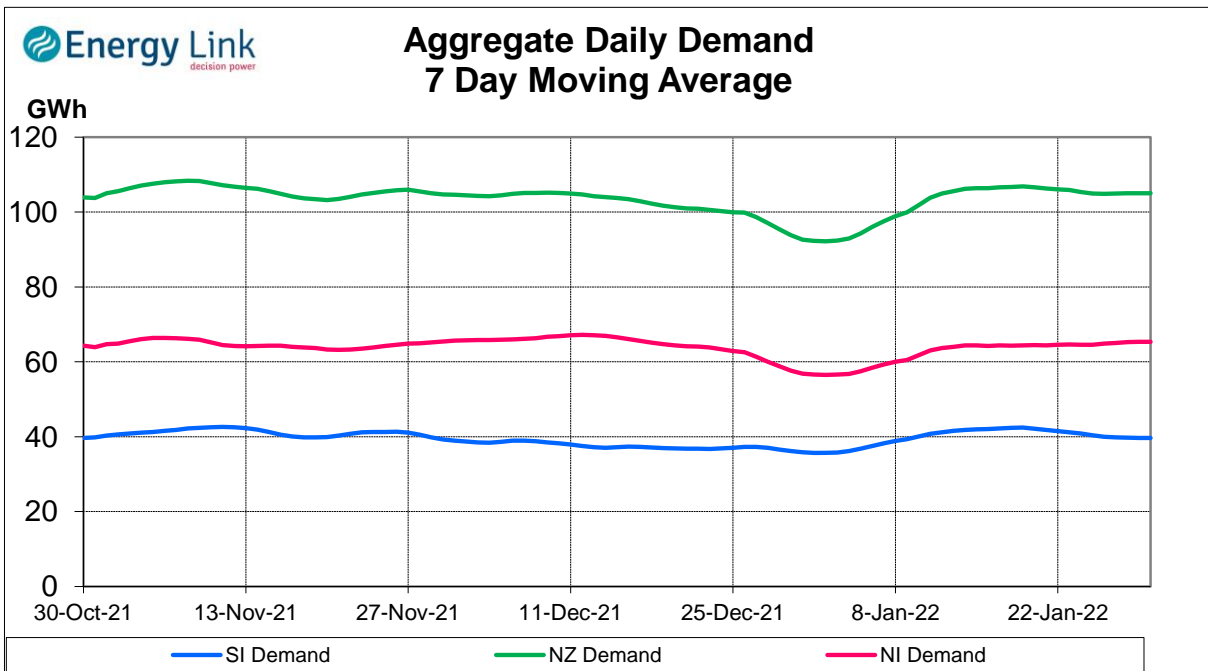
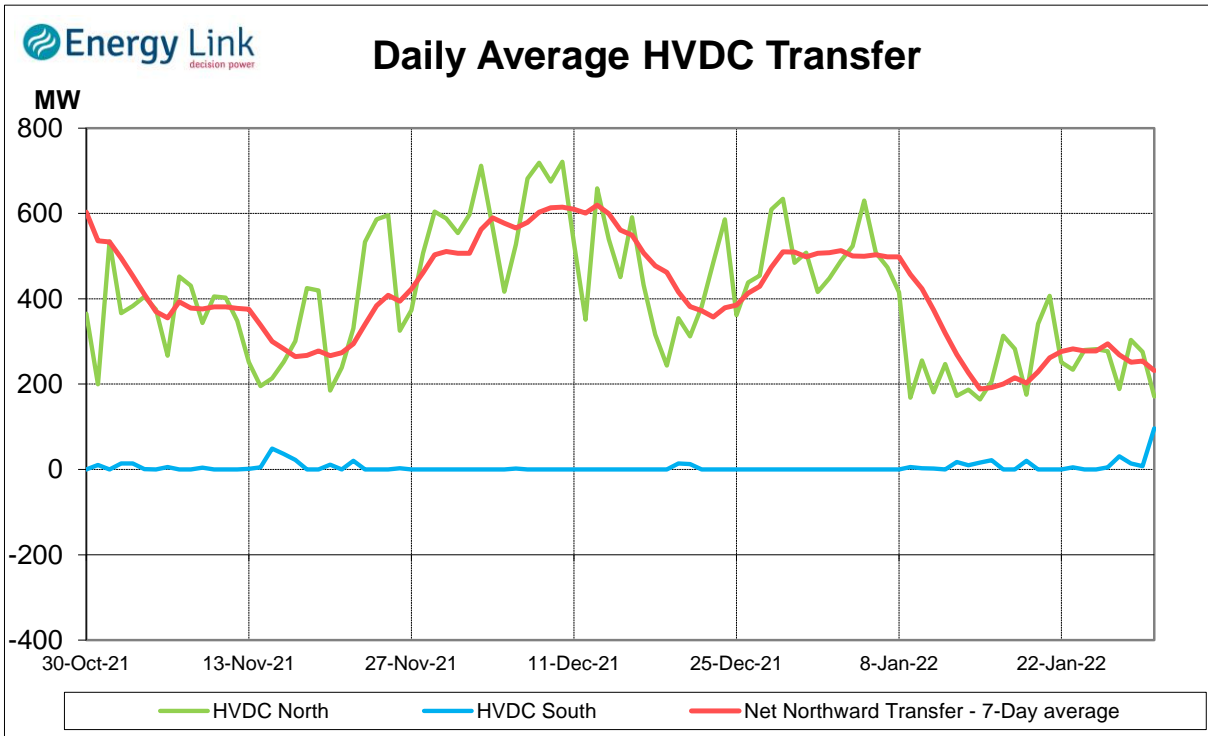
Generation:



Average Generation Market Share ¹

Contact	Mercury	Genesis	Meridian	Trustpower	Other
17% (20%)	20% (19%)	17% (16%)	36% (36%)	1% (2%)	8% (7%)

¹ Generation market share figures are based on SCADA data. The number in brackets represents the generation market share % from the previous week.

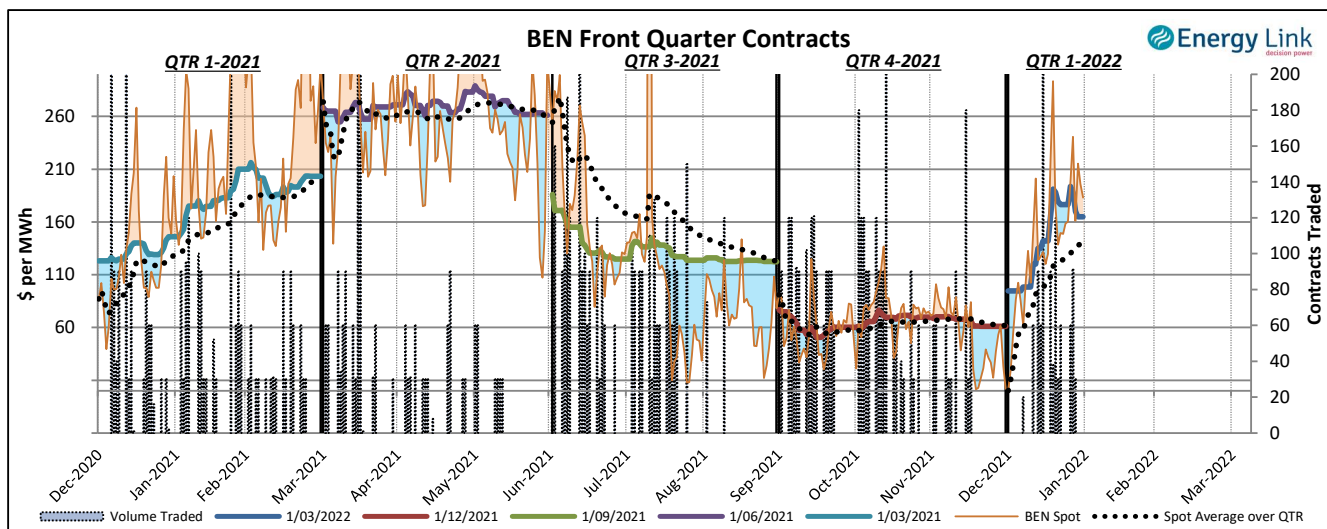
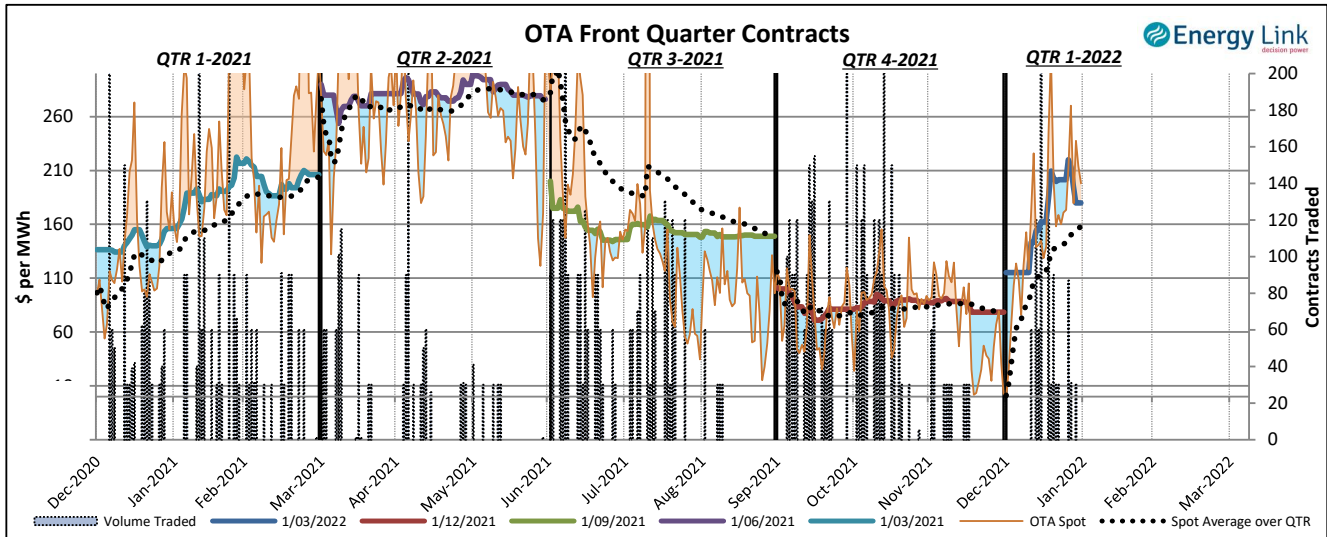


Demand data based on un-reconciled SCADA data.

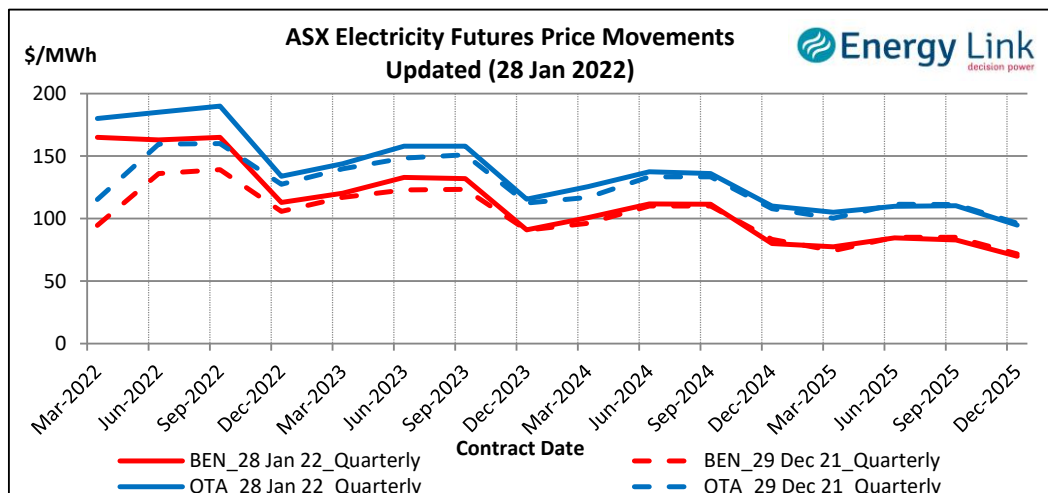
ASX Electricity Futures

The **Australian Securities Exchange (ASX)** listed Base Load Electricity Futures, Strip Futures and Calendar year Strip Options for two grid reference points (Otauhu and Benmore) in the New Zealand electricity market in July 2009. The ASX New Zealand Electricity Futures contracts are cash settled using the arithmetic average of half-hourly prices at the designated node over the period of a calendar quarter.

The two charts below display the price movements of the front quarter futures contract during the current quarter and for the four quarters prior to the current quarter. Also shown is the volume of contracts traded, the relevant spot price and the spot average price over the quarter during the time when each contract was the front quarter contract.



The chart to the right shows the most recent transactions for all currently traded futures contracts at both the BEN & OTA nodes. For comparison these prices are mapped against the prices for the same contracts four weeks prior to the current Market Review.



Carbon Dioxide Emissions

The chart below shows the estimated Carbon Dioxide (CO₂) emissions for New Zealand's major thermal power stations. The estimates are based on weekly generation output and assumptions on each plant's thermal efficiency.

Note: Since 22 Feb 2016, Geothermal plant is now also included in the total carbon emissions.

